



GLOBUS
REALTY
Trust comes from the heart

*Green
Bay*

NEAR INTERNATIONAL AIRPORT, BHOPAL

PREMIUM APARTMENT FOR RECONNECT WITH NATURE

LIFESTYLE APARTMENT FOR SPECIAL YOU !





Green Bay

NEAR INTERNATIONAL AIRPORT, BHOPAL

Kick-off your shoes, let your hair down,
close your eyes and let your surroundings take over. Discover the
peace and tranquility all in the Bay of nature and lap of luxury.

Welcome to "**Green Bay**" near International Airport, Bhopal

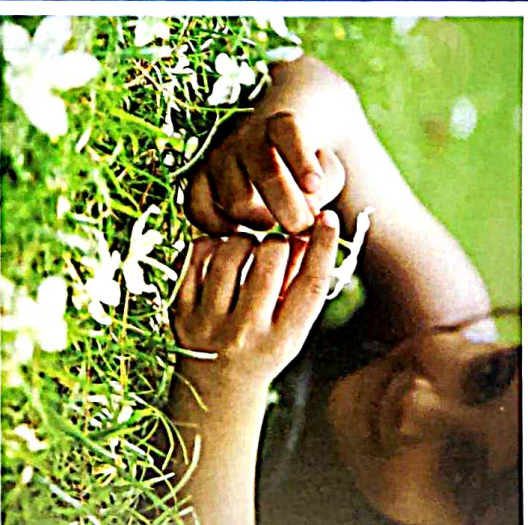


Welcome to Globus "Green Bay"

After a hard day's work, you need space. Lots of space. To unwind, to reconnect with nature.

A place where peace of mind is supreme. Where uncalled hassles have been excluded and nature is just a window away. A place where you can get your full share of sunlight and air. A place where the sky above and the earth below belong only to you. A place that celebrates this wide and wonderful world. An experience to rejuvenate your senses... and that's just a beginning.

Green Bay, A beautiful life



ASK A CITY DWELLER HIS IDEA OF PARADISE ON EARTH

and chances are, his description would come close to **Green Bay**. A haven generously blessed by nature - lush with trees, bordered by a green land, with ponds, streams and flowering shrubs at every turn.



*Green
Bay*



A NEW BEGINNING TO CELEBRATE JOYS OF EVERYDAY LIVING



Discover contemporary world-class lifestyle at a place that is strategic in all aspects. Located at NH-12, Near International Airport, **Globus Green Bay** is a premium residential complex that offers 283 bedroom apartments.

Built on extensive natural and landscaped greens, **Green Bay** homes are aesthetically designed for the joys of modern living. Miles away from pollution and congestion, the project is a hallmark of luxury, the best that the world can offer.

Globus Green Bay promises to be the place to be in.



- Fully enclosed campus secured with high-tech systems.
- Beautifully landscaped Open Spaces.
- Grand Entrance Plaza and Campus Gateway.
- Dedicated children's play area.
- Cement Concrete Roads throughout the township.
- Street Lighting in entire campus.
- Underground Cabling for Electrification & Telecommunication.
- Reserved car parking at ground floor for each apartment.
- Centralized Water Supply.
- Approved by Town and Country Planning Department.
- Loan Facility by leading Banks.



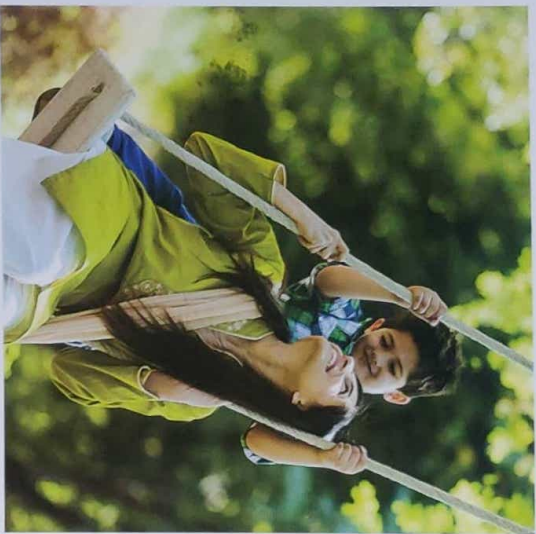
WHAT MORE COULD YOU ASK FOR ?

- Convenience Shopping for Daily needs.
- Refined Neighbourhood through Class Uniformity.
- Multi game courts.
- Jogging / Cycling tracks.
- Rollerblading & Meditation centres.
- Picnic in woods / Carnival park.



AMENITIES

*Green
Park*



GREEN & AESTHETIC SURROUNDINGS WITH INTERNATIONAL ARCHITECTURE

For those who love to enjoy their private space while relishing the best of modern international living trends, **Globus** presents lifestyle living in a well-planned high-rise apartment complex surrounded by lush greens.



STRUCTURE

- Safe and sound - Quality controlled RCC frame structure with best material components.

PLASTER WORK

- Double coat sand faced plaster on external walls.
- Single coat plaster in inside area.

FLOORING & WALL TILING

- Vitrified / Mosaic Finish Tile Flooring having greater strength in entire area.
- Easily maintainable & modern designer ceramic tile concept upto internal level in bathrooms.

DOOR AND WINDOW

- Flush Doors of standard make with safety locks.
- Superior quality hardware fittings.
- Aluminium 3 Track 3 panel windows with fly mesh.
- Marble/Stone sill in window.

ELECTRICAL WORK

- ISI Mark modular electrical accessories.
- Circuit Security MCBs.
- Concealed multi strand copper wiring with 3 phase meter.
- Separate line for inverter connection.

PAINTING

- External painting with weather shield paint finish.
- Internal painting with distemper.

SPECIFICATIONS

WATER PROOFING

- Water proofing in all toilets & terrace area to prevent seepage.

PLUMBING AND SANITATION

- Good quality designer sanitary ware for spotless and sparkling toilets.
- High quality plumbing fixtures.
- Corrosion free and leak proof CPVC/UPVC pipe & fittings (ISI make)

KITCHEN

- Granite platform with ceramic tiles dado upto 2' height.



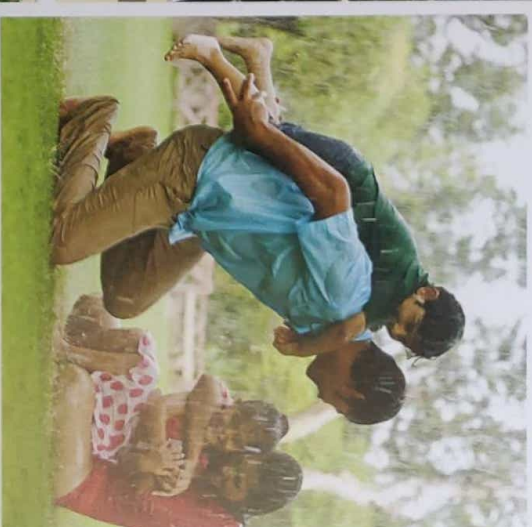
TOMORROW'S LIFESTYLE
AT A PREMIUM ADDRESS
& 4 SIDE OPEN LOCATION

Globus Green Bay, a group housing with a four side open location is certain to give you a whole new way of living amid green and aesthetic surroundings planned by modern architecture

Globus Green Bay offers pocket friendly sizes with lowest cost and car parking along with complete state-of-the-art security, recreational facilities and shopping complex



*Globus
Green
Bay*



THINKING SUSTAINABLE IDEAS THAT MAKE LIFE COMFORTABLE

and convenience is our driving philosophy behind innovations at **Green Bay**. A mini city in itself, **Green Bay** will ensure a better life by providing all the vital amenities a family needs in close vicinity. Be it residential, retail, commercial, education or healthcare, every space has been thoughtfully planned and conveniently located. The city is our endeavor to restore life's harmony, completeness and fulfillment in the living process.



A NEW LIVING EXPERIENCE FOR THOSE WHO WISH TO LIVE LIFE IN THEIR OWN WAY IN EXCLUSIVITY

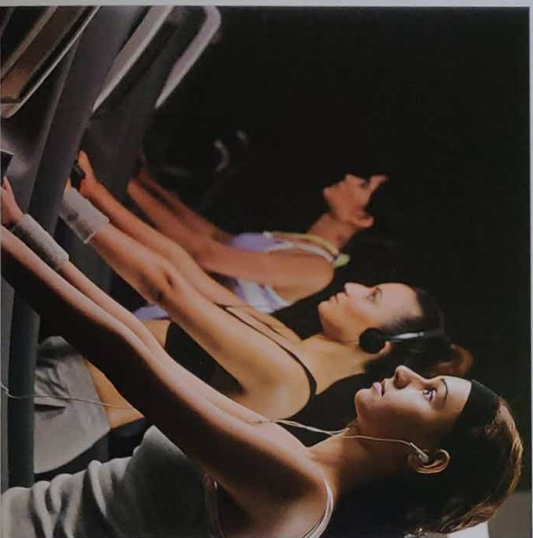
Located right beside the Bhopal-Narsinggarh highway, NH-12, **Green Bay** appeal lies not merely in its location but also in its aesthetics and the wealth of luxury it offers. The project offers a host of amenities to its residents including a spacious club house, landscaped gardens, children's play area, shopping centre & many more. Every apartment is an ode to comfort, in design and quality of construction, incorporating only the best materials and fittings. The apartments feature all the sophisticated conveniences of 21st century living.





CHERISH THE VIVACIOUS WAY OF LIFE. ALL YOU COULD WISH AT THE CLUB HOUSE.

With the pride of ownership of a modern home comes a whole range of facilities and features that only upscale residential developments offer.

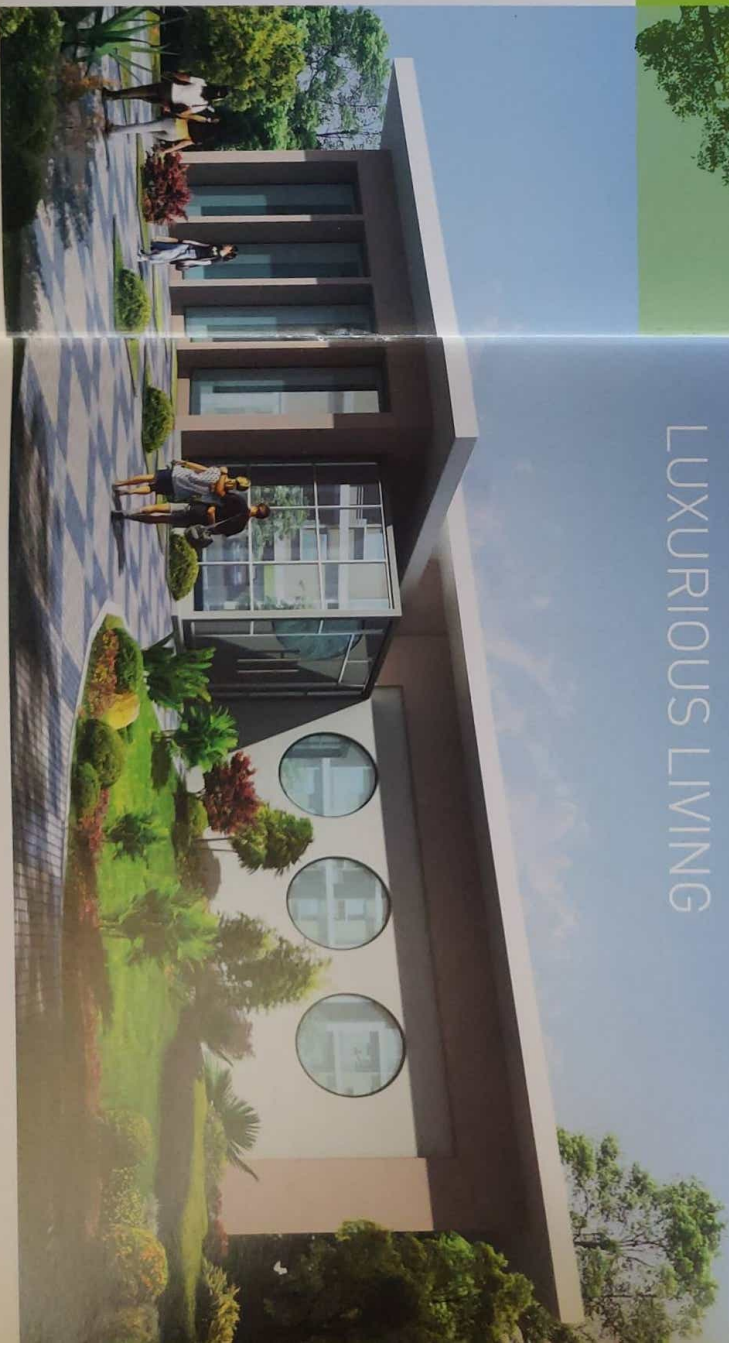


Green Bay is equipped with facilities to deliver luxury. Besides rich specification, an international style club house will cater to the recreational needs. Make your evening enjoyable with your favorite game.

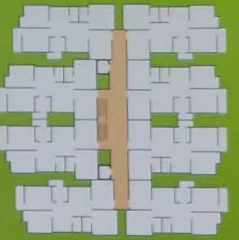
Energise your body at the gym or refresh yourself at the club house.

- WELL EQUIPPED GYMNASIUM
- YOGA & AEROBICS HALL
- KITCHENETTE
- PARTY LAWN WITH PLAY AREA
- TABLE TENNIS AREAS
- INDOOR GAMES ROOM
- POOL, TABLE & AIR HOCKEY
- CARDS ROOM / TV LOUNGE

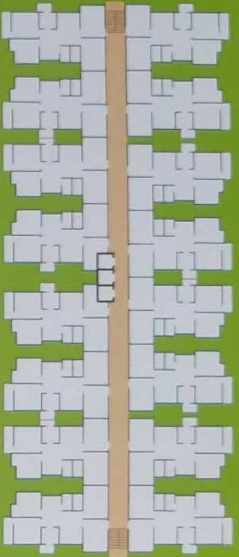
A CATALYST FOR SELF DISCOVERY & LUXURIOUS LIVING



BLOCK - B



BLOCK - C



Available in BLOCK B&C



SUPER BUILT UP AREA - 1255 sqft

BLOCK - D



Available in BLOCK D



SUPER BUILT UP AREA - 1198 sqft

BLOCK - E

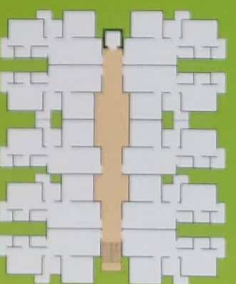


Available in BLOCK E



SUPER BUILT UP AREA - 1230 sqft

BLOCK - F



Available in BLOCK F



SUPER BUILT UP AREA - 862 sqft



THE COMPANY PROFILE

Globus Realty, a professionally managed group in real estate, stands for such qualities as vision, strength, integrity, optimum resource management, and quality consciousness. The group has already earned a name for understanding and fulfilling the needs of its customers.

Globus City, Globus Fab City and **Globus Greens** are some of the projects that have been recently developed by the group. Also **Globus Green Acres, Coral Woods** and **C21 mall** are some of the ongoing projects which hold a lot of promise. Thus, Globus has a brilliant track record of successful projects both in residential as well as commercial arenas. And now, **Green Bay** is all set to create a benchmark of its own!

PREVIOUS PROJECTS



Globus City, Chunna Bhatti



Globus Fab City, Chunna Bhatti



Globus Greens, Lal Ghati Squire



Globus Green Acres, Lal Ghati Squire



Coral Woods, Hoshangabad Road



Century 21 Mall, Hoshangabad Road



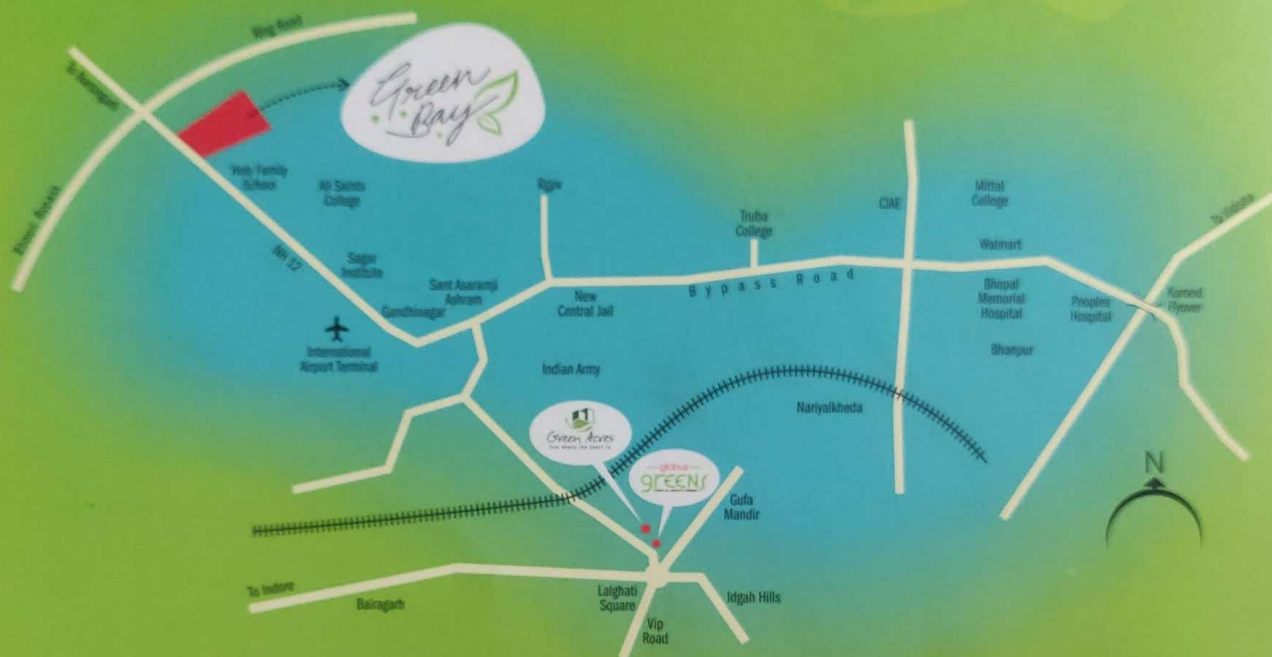


“

“QUALITY IS NEVER BY CHANCE. IT IS THE RESULT OF ENDLESS ADHERENCE TO A WELL-DEFINED PROCESS. IT IS OUR PERSONAL COMMITMENT THAT GLOBUS WILL NOT JUST DELIVER SUPERIOR BUT ABOVE EXPECTATION REALTY SOLUTIONS. EXPECT NOTHING LESS THAN THE BEST FROM US”

”

LOCATION, UNDISPUTEDLY THE BEST !



Site: Near International Airport, NH-12, Narsingarh Road, Bhopal.

DEVELOPER



**GLOBUS
REALTY**
Trust comes from the heart

176, Mezzanine Floor, Zone-II
M.P. Nagar, Bhopal (MP)
Tel.: 9752410930, 9752410931
Mob.: 9229222319, 9669697580
globusmegaprojects@gmail.com
www.globusmegaprojects.com

ARCHITECTS

Vikram & Aradhana Mohile
INTERARCH, Bhopal
Ph.: 09229169130, 9826725535

LANDSCAPE DESIGNER
LaSpazio Designs Pvt. Ltd.

STRUCTURAL DESIGNER
Apoorv Dhonde & Associates

MARKETING ASSOCIATES



**Sampatti
Nivesh**
Creating spaces for your dreams

68, 11nd Floor, Zone-II,
Opp. Jyoti Cinema, M.P. Nagar, Bhopal 462011
Mobile: 9303132679, 9993427490
sampattiniveshbhopal@gmail.com

Legal Notes: In the interest of the continual development in design and quality of construction, the Developer reserves all the rights to make any changes in the scheme, including technical specifications, designs, planning and layout at any stage and all the purchasers shall abide by such changes. Changes/alterations of any nature by any of the purchasers or any association formed by them, including the elevations, exterior colour scheme of the apartments or any other change affecting the overall scheme, concept or outlook of the scheme are strictly NOT PERMITTED during or after the completion of the scheme. The brochure is intended only to convey the essential design and technical features of the scheme and shall not be construed to form a part of any legal document.